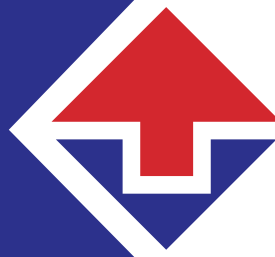


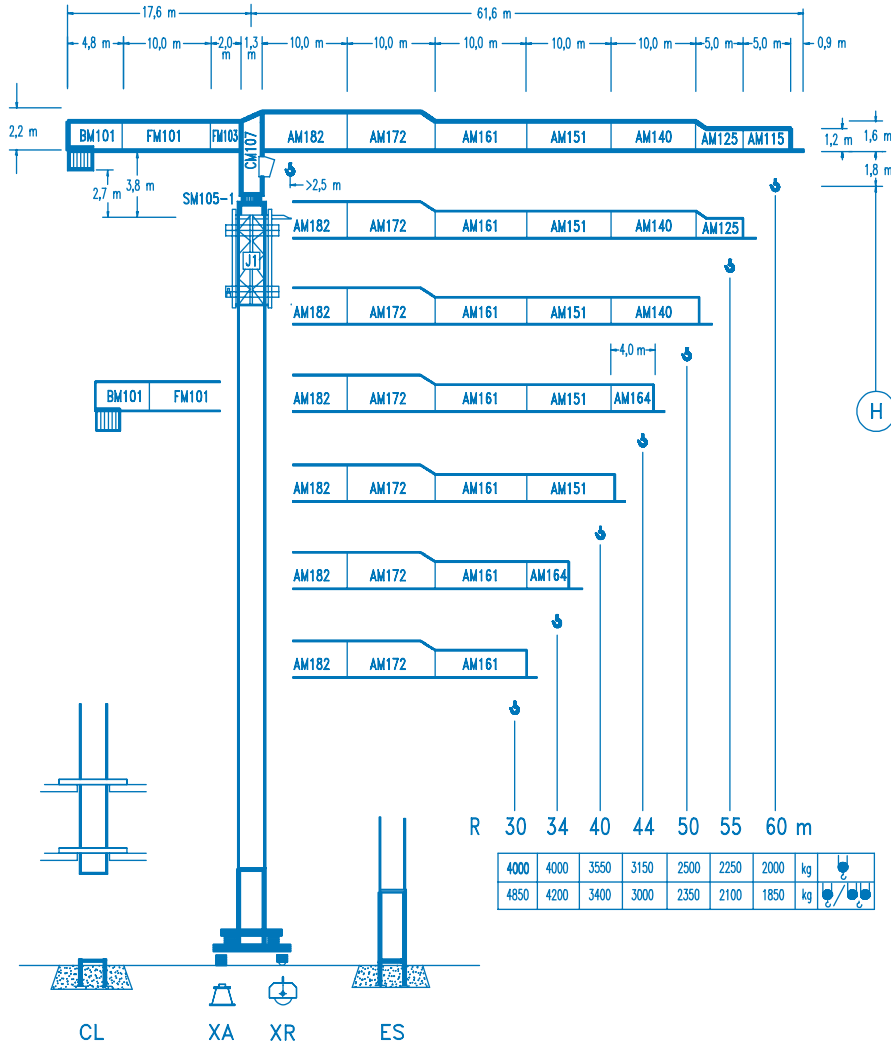
Comansa 10 LC 140

FLAT TOP TOWER CRANE



VERTICAL TRANSPORTATION

CRANE HIRE SPECIALISTS



CE
DIN 15018 H1 B3

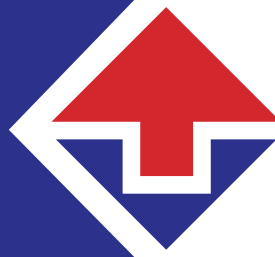
R	R(Cmax)	Cmax	25	30	34	40	44	50	55	60
60	33,1 m 17,5 m	4000 8000	4000 5365	4000 4350	3885 3775	3230 3095	2895 2750	2490 2345	2225 2075	2000 1850
55	33,5 m 17,7 m	4000 8000	4000 5420	4000 4395	3930 3795	3270 3125	2930 2785	2520 2375	2250 2100	
50	33,2 m 17,5 m	4000 8000	4000 5375	4000 4355	3900 3765	3240 3100	2905 2760	2500 2350		
44	35,6 m 18,8 m	4000 8000	4000 5805	4000 4715	4000 4080	3515 3365	3150 3000			
40	36,0 m 18,9 m	4000 8000	4000 5860	4000 4760	4000 4120	3550 3400				
34	34,0 m 19,2 m	4000 8000	4000 5970	4000 4850	4000 4200					
30	30,0 m 19,2 m	4000 8000	4000 5970	4000 4850						

DISCLAIMER: Product introduction sheet supplied for reference purposes. Please see www.verticaltransportation.com for manufacturer detailed technical specification.

www.verticaltransportation.com

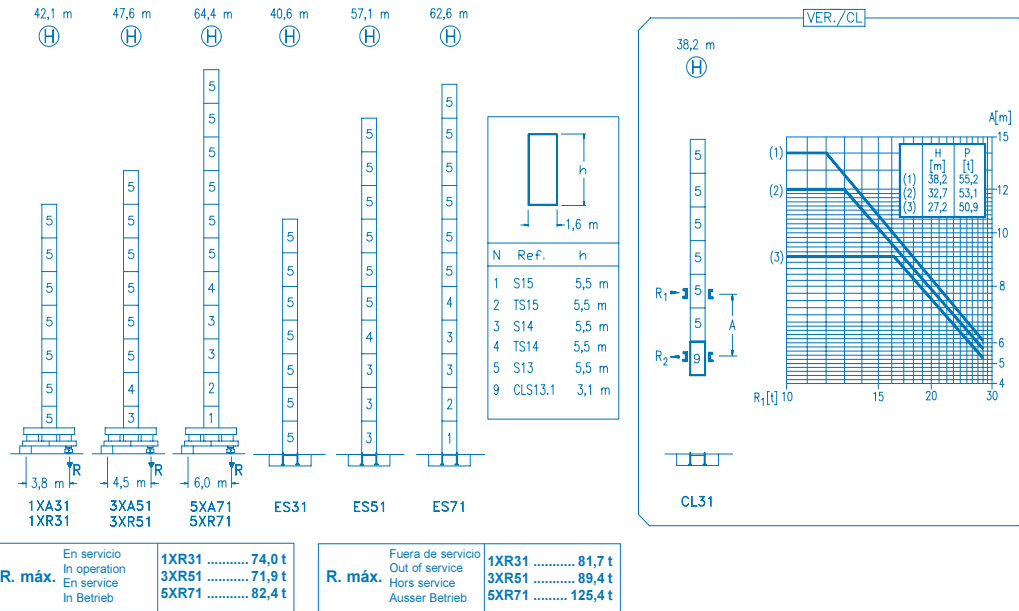
Comansa 10 LC 140

FLAT TOP TOWER CRANE



VERTICAL TRANSPORTATION

CRANE HIRE SPECIALISTS



R. máx.	En servicio In operation En service In Betrieb
1XR31	74,0 t
3XR51	71,9 t
5XR71	82,4 t

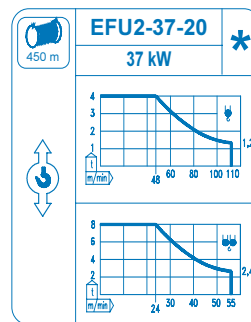
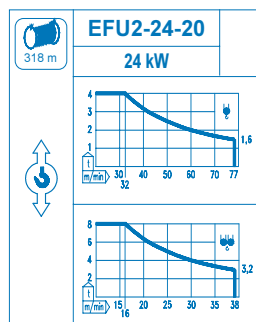
R. máx.	Fuera de servicio Out of service Hors service Ausser Betrieb
1XR31	81,7 t
3XR51	89,4 t
5XR71	125,4 t

CFU-4.0
4 kW
0 ↻ 66 m/min

GR-7.5
2 x 75 Nm
0 ↻ 0,7 rpm

TS2-5.5 | **TRA-7.5**
2 x 55 Nm | 2 x 75 Nm
0 ↻ 20 m/min
1XR31 | 3XR51 | 5XR71

TRA-7.5VC
2 x 75 Nm
0 ↻ 20 m/min
5XR71



Tensión de alimentación Operating voltage Tension de service Betriebsspannung	400 V 3 ph 50 Hz
--	------------------------

Opcional Optional En option Kaufoption	*
---	---

DISCLAIMER: Product introduction sheet supplied for reference purposes. Please see www.verticaltransportation.com for manufacturer detailed technical specification.

0525 850027 | info@verticaltransportation.com

www.verticaltransportation.com